

QuikTrip Store 4454
Harlem and Garfield
Oak Park, IL



QuikTrip: A Brief History

- September 25, 1958: Founders Chester Cadieux and Burt Holmes open the first QuikTrip in Tulsa, OK
- October 1, 1968: QuikTrip opens the first store of the Kansas City Division
- April 1971: QuikTrip offers gasoline for the first time
- January 1972: QuikTrip opens the Iowa Division
- January 1973: QuikTrip offers self-serve fountain drinks for the first time
- March 1985: QuikTrip announces expansion in Atlanta and St. Louis
- June 22, 1991: QuikTrip's Guaranteed Gasoline Campaign is introduced
- January 2000: QuikTrip opens the Dallas/Ft. Worth Division
- March 2000: QuikTrip announces plans to open Arizona Division
- September 2000: Roller grills are introduced at QuikTrip
- March 2005: QuikTrip Kitchens opens
- June 2008: QuikTrip opens 500th Store
- October 2011: QuikTrip expands into North and South Carolina
- October 2018: QuikTrip expands into Austin and San Antonio, Texas
- Future: QuikTrip expands into Denver, Colorado and Chicago, Illinois



QuikTrip: A Socially Responsible Company

- QuikTrip contributes 5% of its profits to charitable organizations in the local communities in which it operates
- QuikTrip is a National Safe Place location for endangered youth
- Last year QuikTrip contributed \$50 million in charitable contributions



FOLDS *of* HONOR



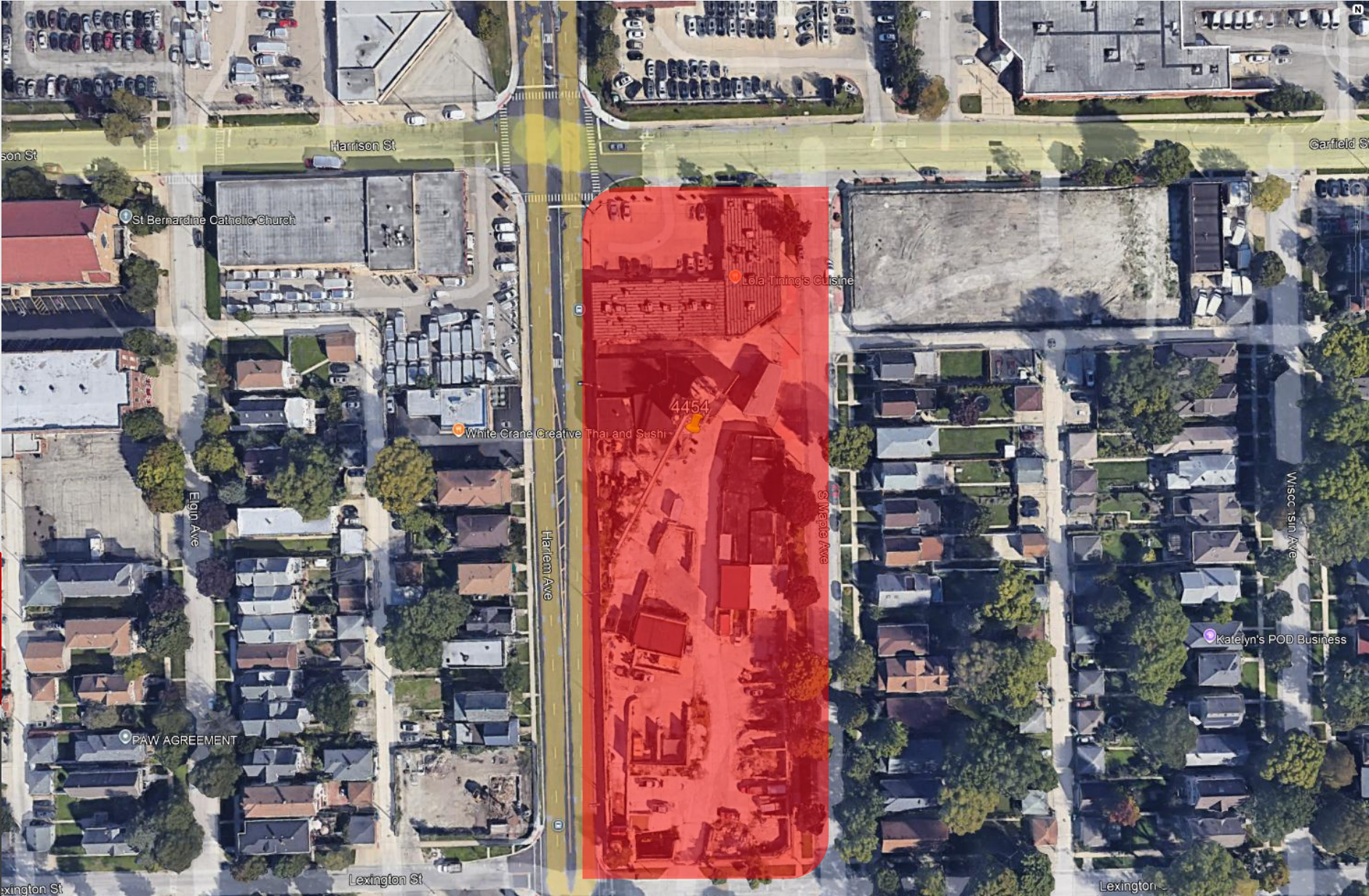
QuikTrip: Dedication to Employees

Purpose: To Give Employees the Opportunity to Grow and Succeed

- Retaining Employees Long-Term
- Tuition Reimbursement
- QuikTrip Cares: Employee Disaster Fund
- QuikTrip Scholarships
- Celebrating Employee Anniversaries
- Employee Security: ID Badges, Emergency Pagers, Surveillance...
- QuikTrip has never laid off any employee in the history of the Company
- Employee Stock Ownership Program
- Promote from within: Current CEO started in a store



Current Site



Current Site- Harlem and Garfield



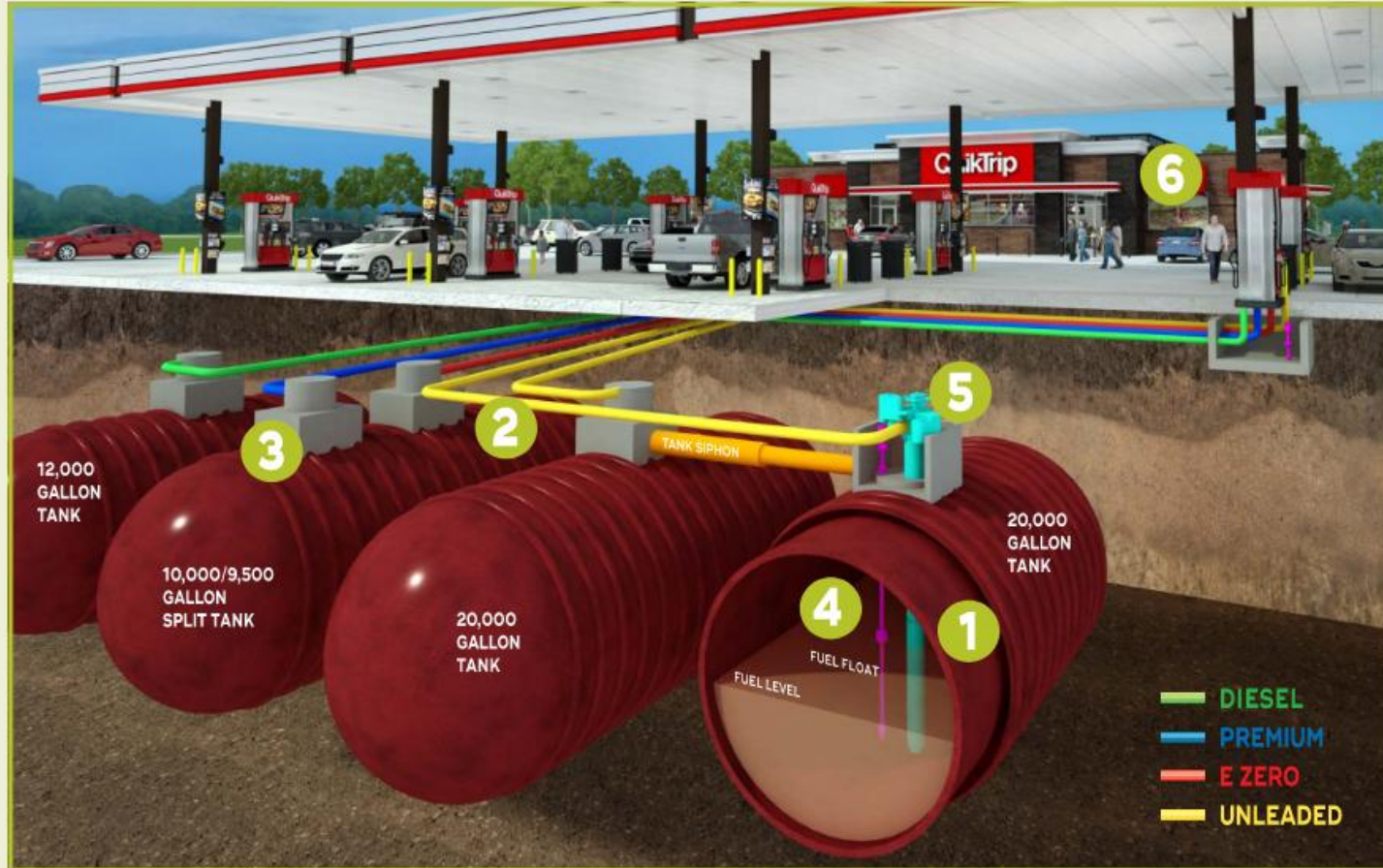
Proposed Site Plan- Harlem and Garfield



Proposed Aerial

The logo for QT, featuring the letters 'Q' and 'T' in a bold, white, stylized font with a black outline, set against a red square background.

Environmental



FUEL

STATE-OF-THE-ART FUEL SYSTEM

- QuikTrip's cutting-edge fuel system includes several redundant leak prevention and monitoring systems. This system is designed with state-of-the-art interstitially monitored double-walled fiberglass piping installed to minimize joints. Additionally, underground sumps equipped with liquid sensors and a duplicative leak detection monitoring system are used to identify potential leaks in real time.
- The graphic representation provided on this page is a cross-sectional view of the QT fuel system, which is considered the gold-standard in our industry for protecting the environment while providing the finest quality fuel to our customers.

TOP TIER™ GASOLINE

- QuikTrip customers receive higher detergent additives compared to non-Top Tier retailers offering only the minimum EPA required detergent. Top Tier additives help prevent the buildup of harmful engine deposits which may reduce fuel economy and optimal engine performance. QuikTrip Gasoline is guaranteed not to harm engines.

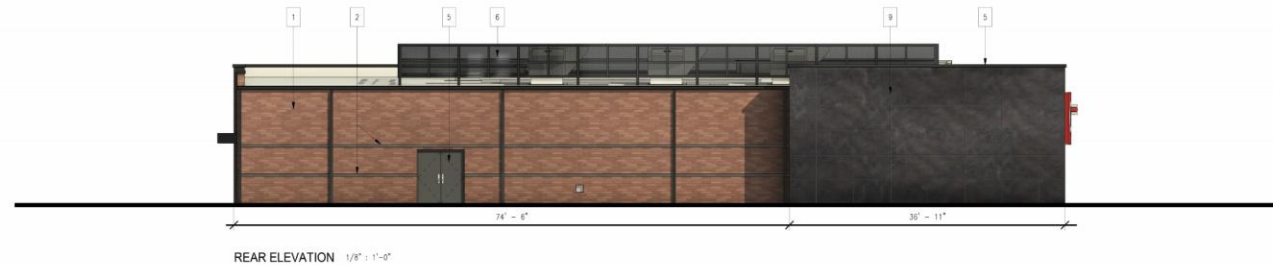
RENEWABLE FUELS

- QuikTrip's fuel offer includes renewable fuels in the form of ethanol blended gasoline and biodiesel. These safer, cleaner-burning fuels significantly reduce carbon emissions and the dependency on fossil fuels.

- | | | | | | |
|--|--|---|---|--|---|
| <p>1 DOUBLE-WALL FIBERGLASS TANKS WITH LEAK SENSORS</p>  | <p>2 DOUBLE-WALL, FIBERGLASS PIPE</p>  | <p>3 TRANSITION AND DISPENSER SUMPS WITH SENSORS</p>  | <p>4 AUTOMATIC TANK GAUGES (ATG PROBE)</p>  | <p>5 VARIABLE SPEED SUBMERSIBLE TURBINE PUMPS</p>  | <p>6 TANK GAUGE MONITORING SYSTEM LOCATED IN STORE</p>  |
|--|--|---|---|--|---|



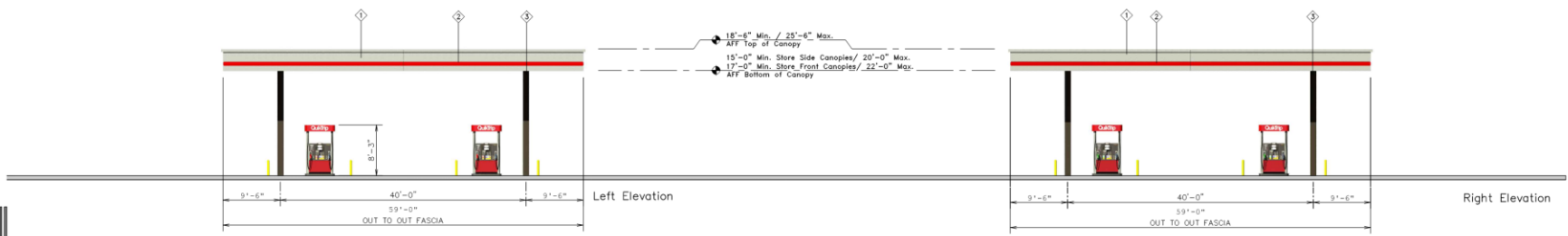
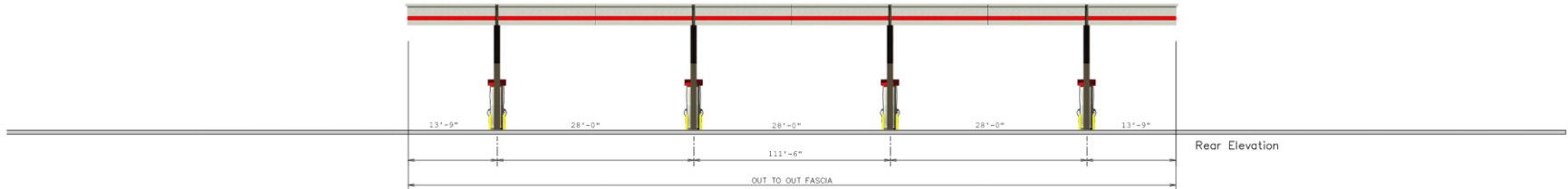
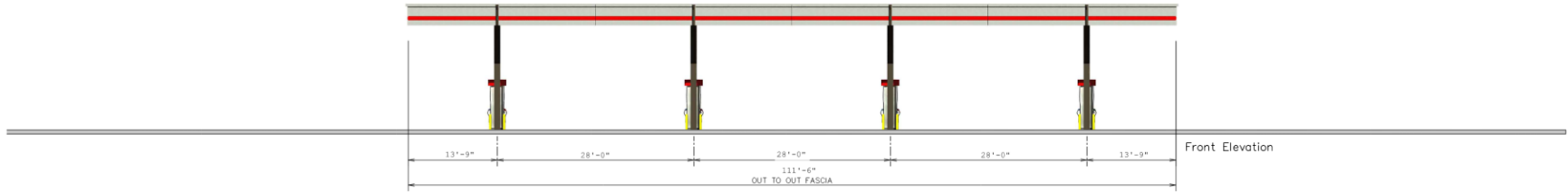
Building Elevations



#	FINISH	MANUFACTURER	SPECIFICATION
1	BRICKSTONE	INTERSTATE BRICK	ATLAS STRUCTURAL BRICK
2	MIDNIGHT	INTERSTATE BRICK	ATLAS STRUCTURAL BRICK
3	BRUSHED ALUMINUM	REMOROND	EXCOR
4	RED POLYCARBONATE OF BEIGN	ALLEN INDUSTRIES	ILLUMINATED BAND
5	LINE	ALLEN INDUSTRIES	METALFRAM
6	BLACK	ALL COURT FABRICS	POLYPRO MESH
7	SL-608	ALLEN INDUSTRIES	SIGNAGE
8	DB-56	ALLEN INDUSTRIES	ILLUMINATED SIGNAGE
9	CLASSIC NERO	CROSSVILLE	EXTERIOR TILE



Canopy Elevations



	QuikTrip. <small>4705 South 129th East Ave. Tulsa, OK 74124-7008 P.O. Box 5475 Tulsa, OK 74101-5475 (918) 615-7700</small>	Store #	4454 G4 DBL STACK 8 CANOPY (NON-STD)	Address:	Harlem and Garfield	City, State:	Oak Park, IL	<table border="1"> <thead> <tr> <th>FINISH</th> <th>MANUFACTURER</th> <th>SPECIFICATION</th> </tr> </thead> <tbody> <tr> <td>1. EXPOSED ALUMINUM</td> <td>BEYONSON</td> <td>CANOPY</td> </tr> <tr> <td>2. 1/2" POLY CARBONATE</td> <td>PLAZA INDUSTRIES</td> <td>UNPAINTED BASIC</td> </tr> <tr> <td>3. 1/2" BOARD</td> <td>DEEMER - WILLIAMS</td> <td>METAL PANEL</td> </tr> </tbody> </table>	FINISH	MANUFACTURER	SPECIFICATION	1. EXPOSED ALUMINUM	BEYONSON	CANOPY	2. 1/2" POLY CARBONATE	PLAZA INDUSTRIES	UNPAINTED BASIC	3. 1/2" BOARD	DEEMER - WILLIAMS	METAL PANEL
		FINISH	MANUFACTURER	SPECIFICATION																
1. EXPOSED ALUMINUM	BEYONSON	CANOPY																		
2. 1/2" POLY CARBONATE	PLAZA INDUSTRIES	UNPAINTED BASIC																		
3. 1/2" BOARD	DEEMER - WILLIAMS	METAL PANEL																		
Serial #	00-0000-GD08	Scale:	1/8" = 1'-0"	Issue Date:	04.17.25	Drawn By:	JK													
				<small>COPYRIGHT © 2011 QUIKTRIP CORPORATION. DESIGN PATENTS QUIKTRIP PLANS ARE THE EXCLUSIVE PROPERTY OF QUIKTRIP CORPORATION, TULSA, OKLAHOMA. THESE PLANS ARE PROTECTED BY THEIR ENTIRETY BY DOMESTIC AND INTERNATIONAL COPYRIGHT AND PATENT STATUTES. ANY UNAUTHORIZED USE, REPRODUCTION, PUBLICATION, DISTRIBUTION OR SALE IN WHOLE OR IN PART, IS STRICTLY FORBIDDEN.</small>																

Special Use Standards

- **The establishment, maintenance, and operation of the proposed special use will not endanger the public health, safety, or welfare.**
 - ✓ Improves dilapidated property
 - ✓ Improves public safety
 - ✓ Built and operated in accordance with federal, state and local fuel storage and food safety laws
- **The establishment, maintenance, and operation of the proposed special use will not endanger the public health, safety, or welfare.**
 - ✓ Compatible with adjacent properties:
 - Auto dealership to the North
 - Carwash, U-Haul and restaurant to the West
 - Mitigates impact of transition from commercial use to residential use to the East
- **The special use in the specific location is consistent with the spirit and intent of this Ordinance and adopted land use policies.**
 - ✓ Consistent with *Envision Plan (2014)*
 - ✓ Generally:
 - Strengthening commercial districts
 - Diversifying the community's tax base
 - Providing choices to consumers and residents
 - ✓ Site-specific:
 - Mixed-use development at the proposed site "depending on the availability to implement a large-scale site clean-up redevelopment effort."
- **The special use conforms to the regulations of the zoning district in which it is to be located.**
 - ✓ GC General Commercial District "includes uses that more auto-oriented and heavier in nature."
 - ✓ Proposal provides for 48-parking spots (30 required)



QuikTrip requests approval of this SUP, Prelim Alley vacation, and Preliminary Subdivision.